

Spectral Style Transfer for Human Motion between Independent Actions

Supplementary Material: User Study Question Samples

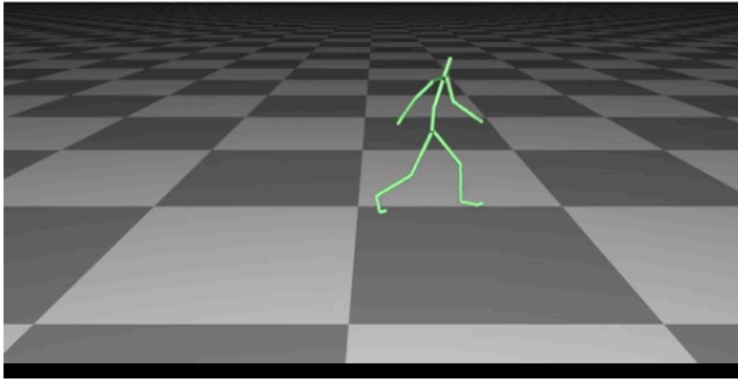
M. Ersin Yumer
Adobe Research

Niloy J. Mitra
University College London

RECOGNITION (1) USER STUDY SAMPLE QUESTION

Please take your time. The video will replay infinitely many times for your convenience. Once you have made your choice, please move on to the next question.

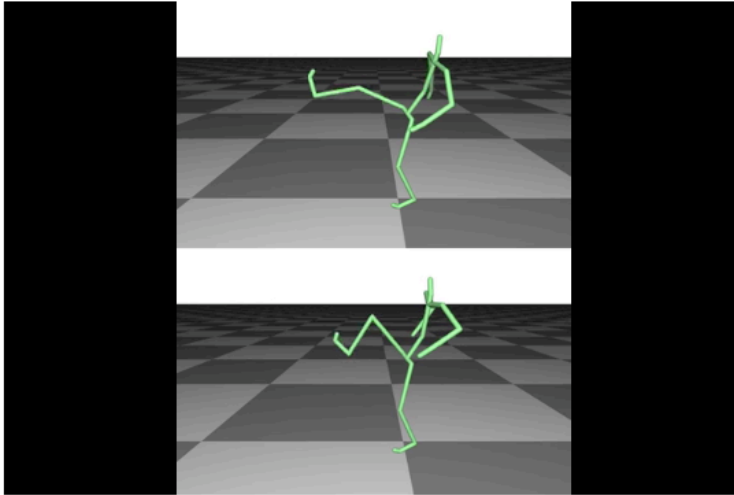
1. What style does the following action represent the most?



- Sexy
- Childlike
- Struggling
- Angry
- Oldlike
- Proud
- Depressed

REALISM (2) USER STUDY SAMPLE QUESTION

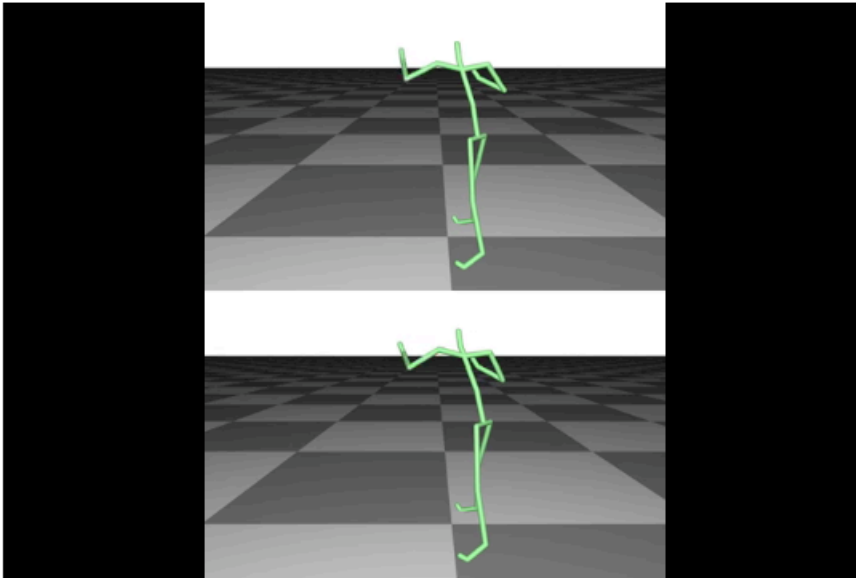
7. Which of the following *angry kick* motions are generated synthetically, and/or collected through real human motion data capture?



- Top: synthetic, Bottom: captured
- Top: captured, Bottom: synthetic
- Both are synthetic
- Both are captured

COMPARISON (3) AND DATABASE ENHANCEMENT (4) SAMPLE QUESTION

13. Which of the following actions look like a more realistic *proud punch*?



- Top
- Bottom
- Both
- None