

Relationship Templates for Synthesizing Scenes with Complex Relations

Supplementary Material

1 Full Database for Pairwise Synthesis	2
2 Additional Pairwise Results	3
3 Additional Spatially Repeated Synthesis Results	5
4 User Study Screenshot	6
5 Additional Large-Scale Scene Synthesis Results	7

1 Full database for Pairwise Synthesis

(50 models)

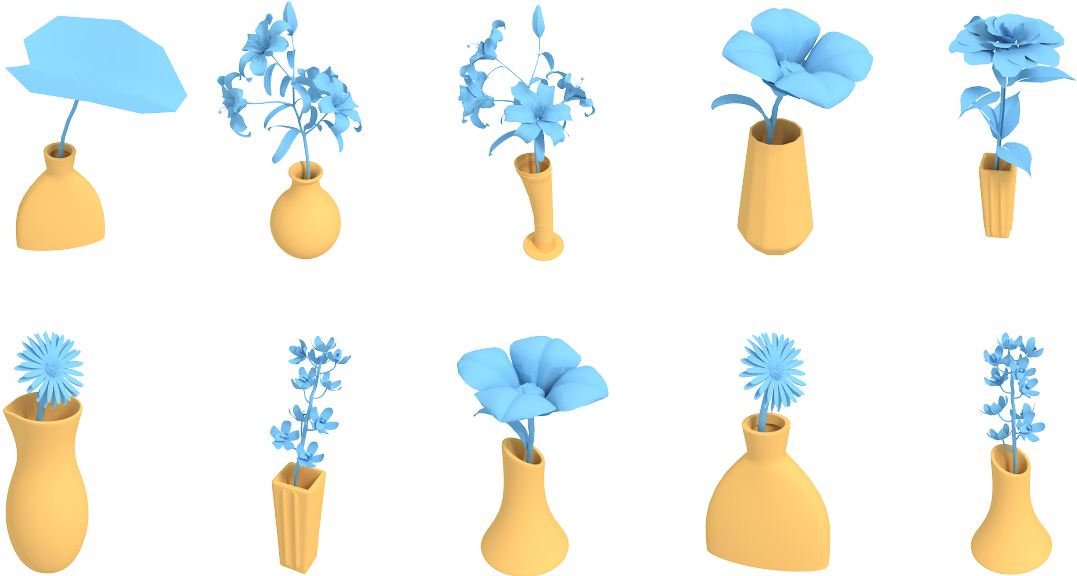


2 Additional Pairwise Synthesis Results

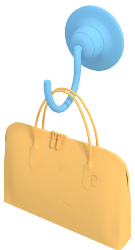
Input



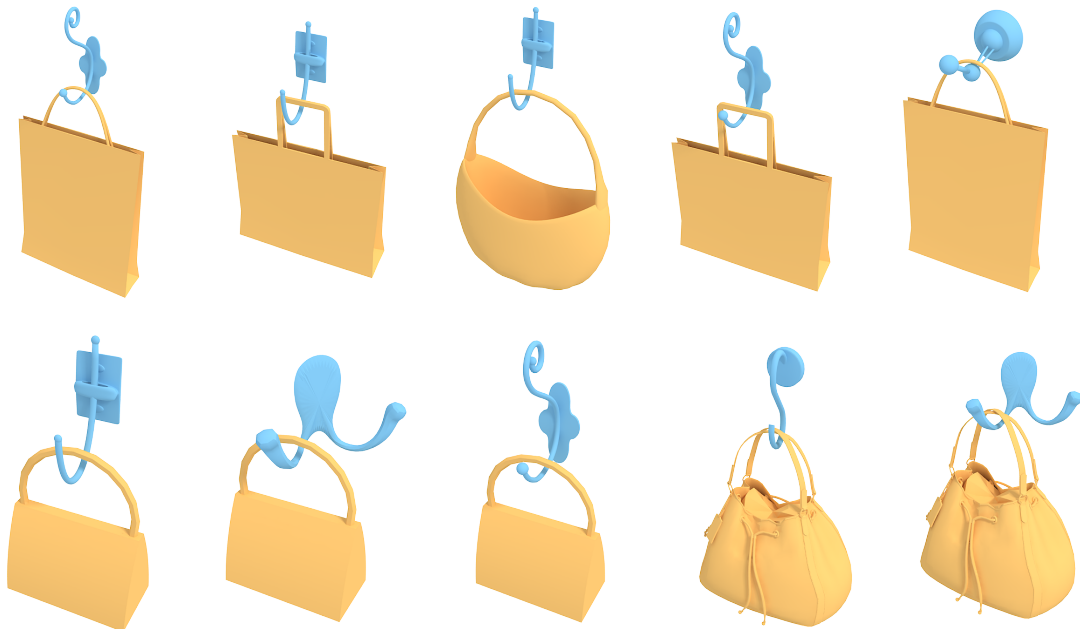
Results



Input

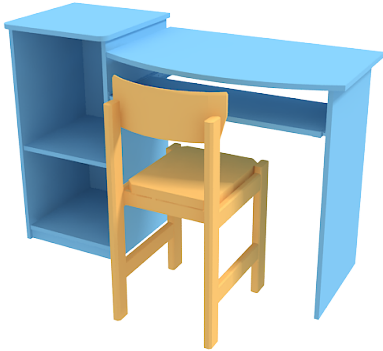


Results

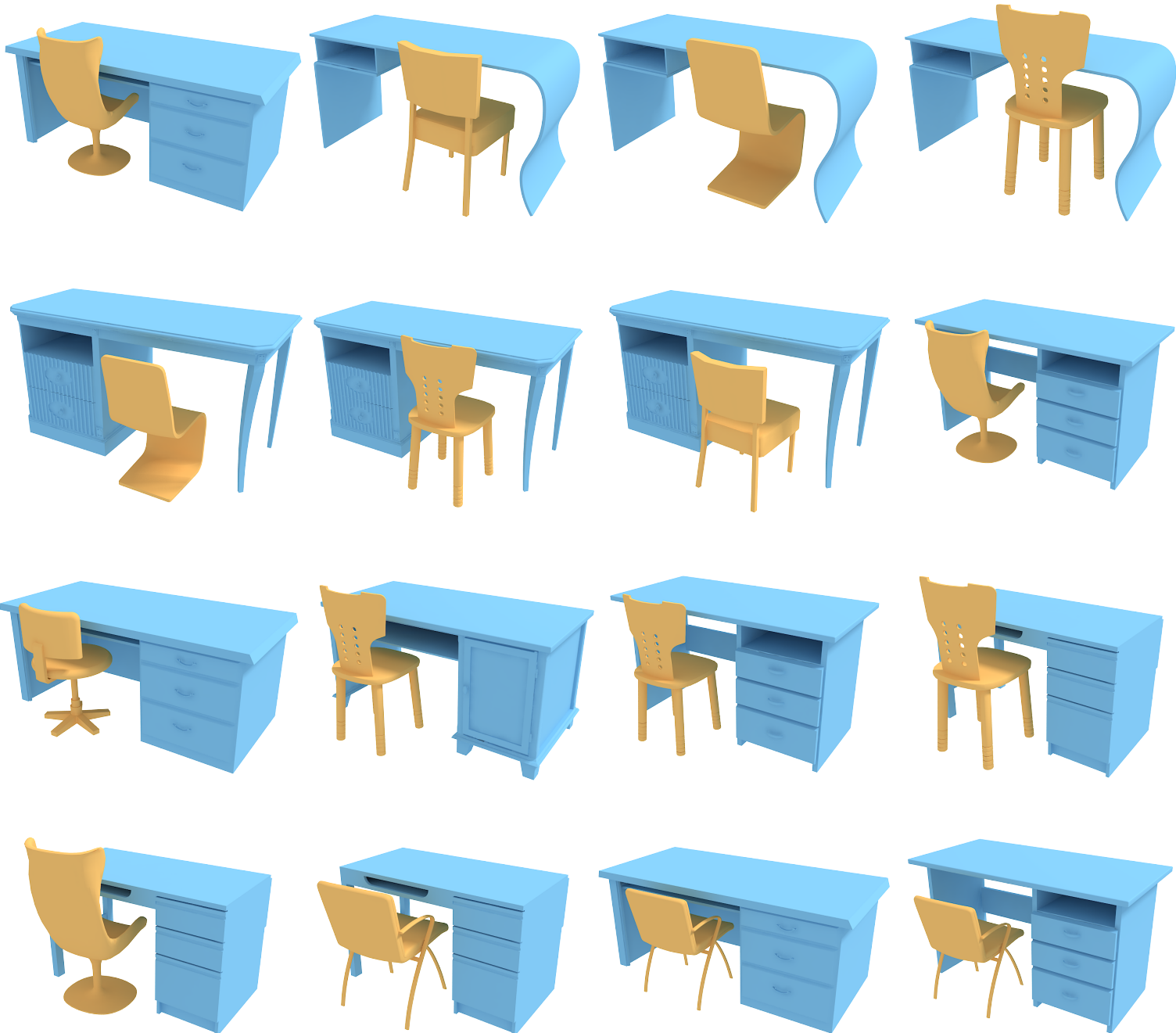


2 Additional Pairwise Synthesis Results

Input

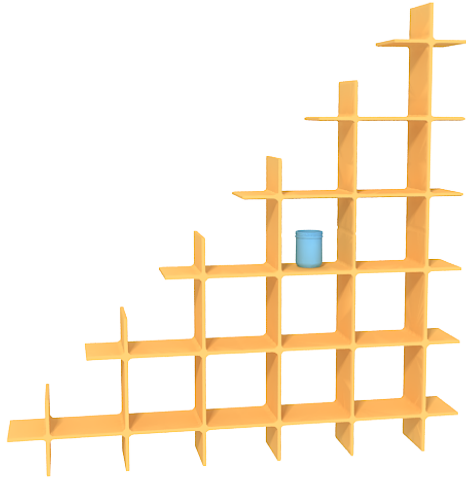


Results

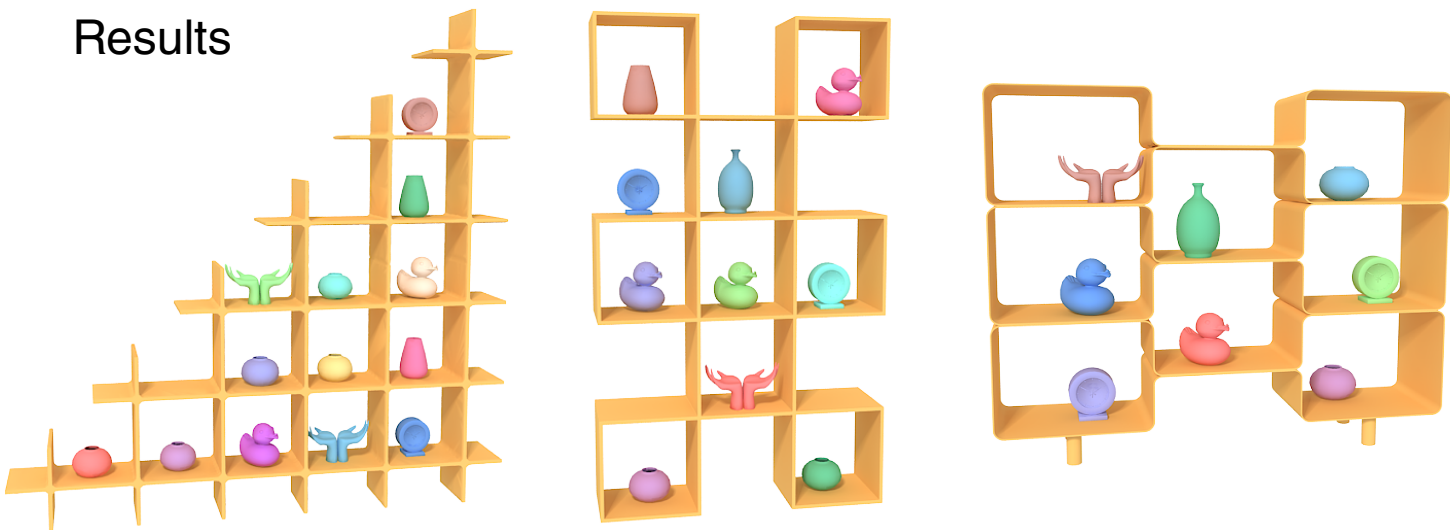


3 Additional Spatially Repeated Synthesis Results

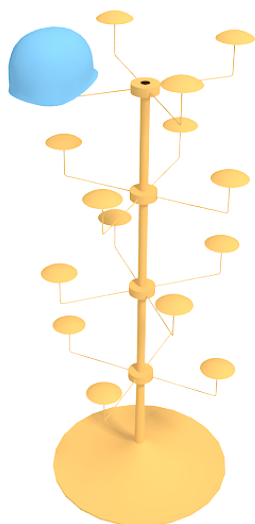
Input



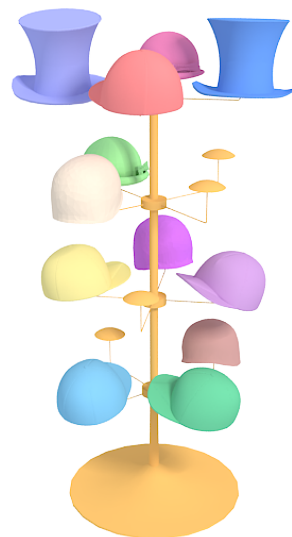
Results



Input



Result



4 User Study Screenshot

Please select the object arrangement below that you judge to be more realistic.

- *DO* consider the relative arrangement of objects. (For example, *DO* judge if the relative arrangement of persons, desks and chairs seems realistic to you.)
- Do *NOT* consider colors and materials. (For example, ignore that some objects may have a more realistic color than others.)
- Do *NOT* consider the quality of individual models. (For example, ignore how realistic the person models look.)



Left is more realistic



Right is more realistic

Choose the left or right object arrangement before submitting.

If you have any questions about this HIT, encounter a problem, or have suggestions on how we could improve it, please let us know:

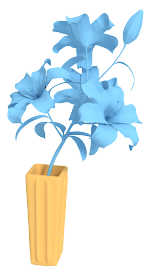
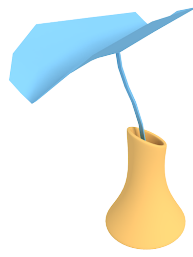
5 Additional Large-Scale Scene Synthesis Results

Input

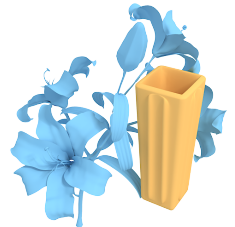
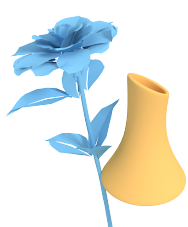
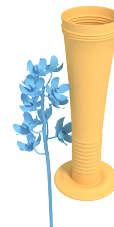
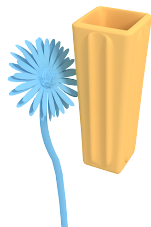
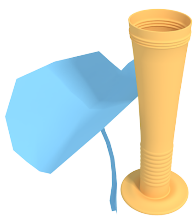


A

Results - ours



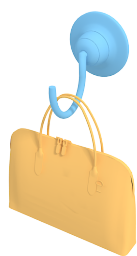
Results - [Fisher et al. 2012]



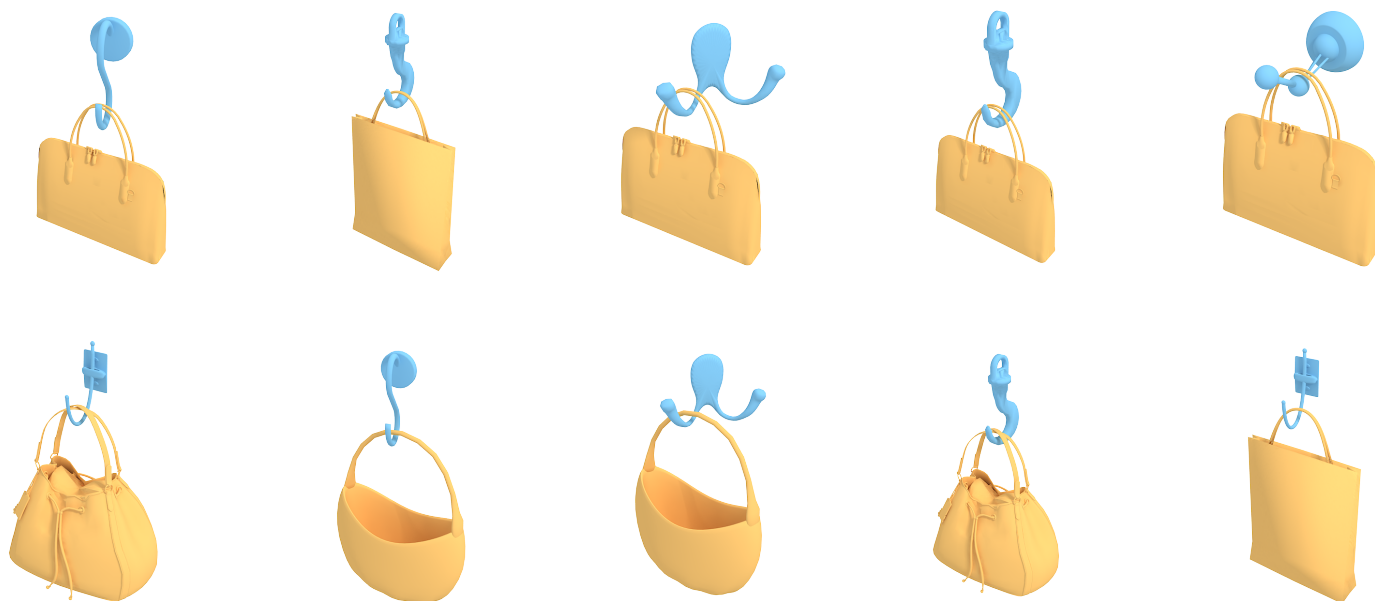
5 Additional Large-Scale Scene Synthesis Results

B

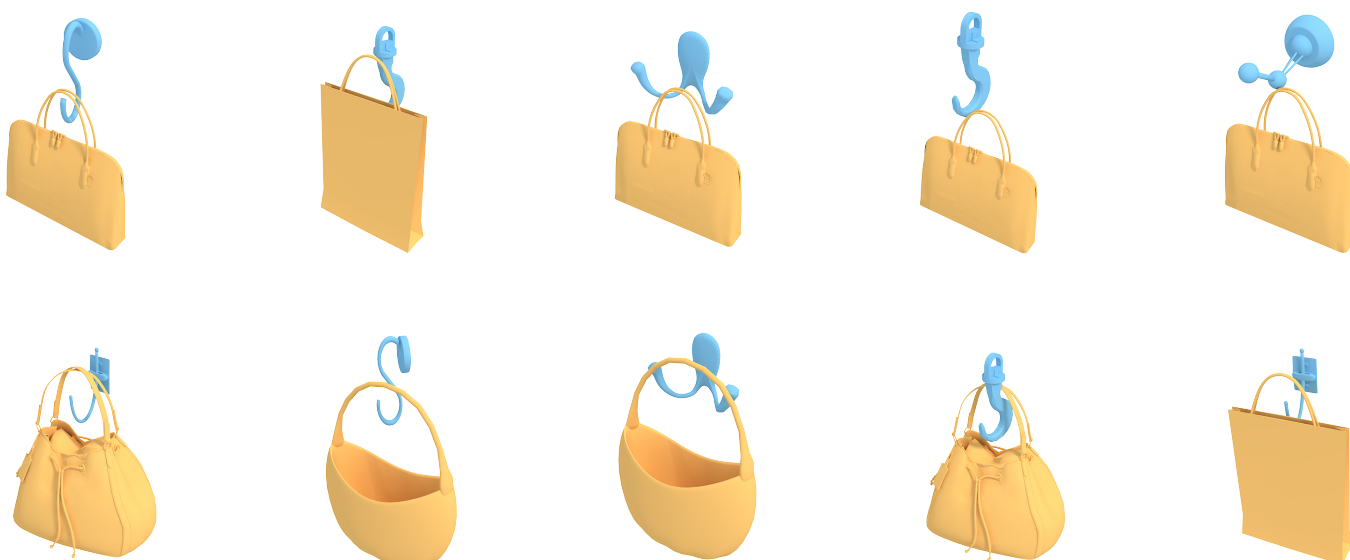
Input



Results - ours

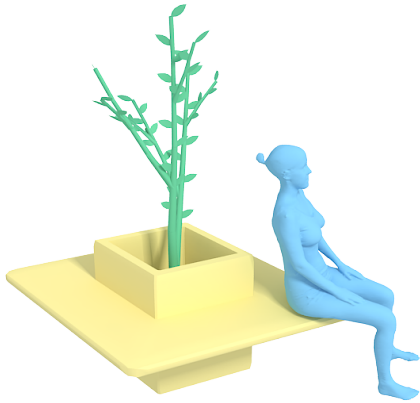


Results - [Fisher et al. 2012]



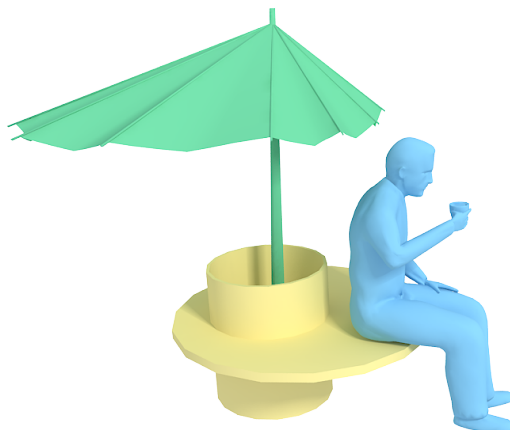
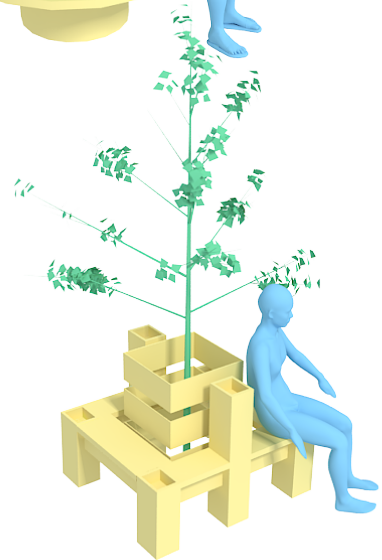
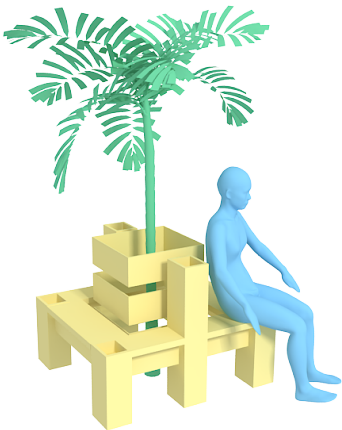
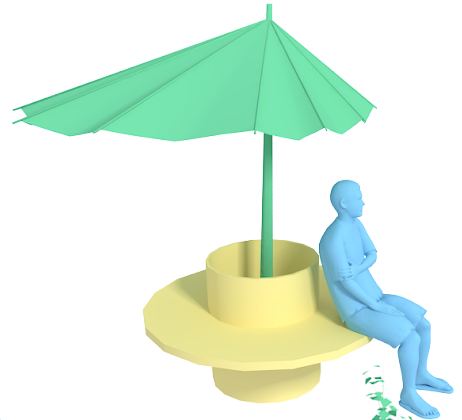
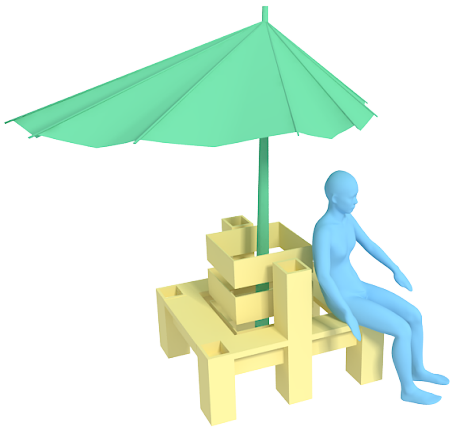
5 Additional Large-Scale Scene Synthesis Results

Input



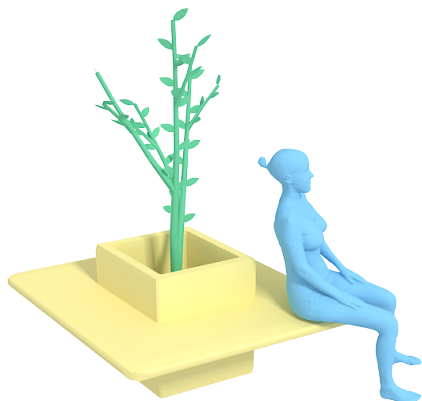
C

Results - ours



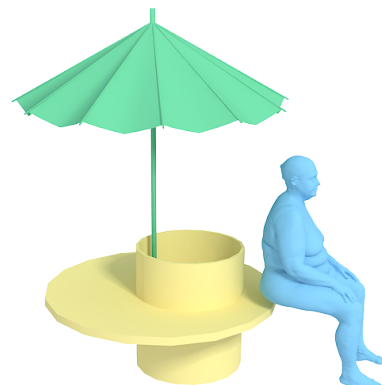
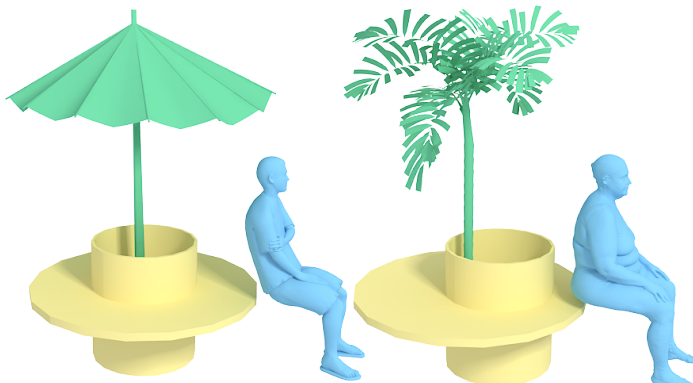
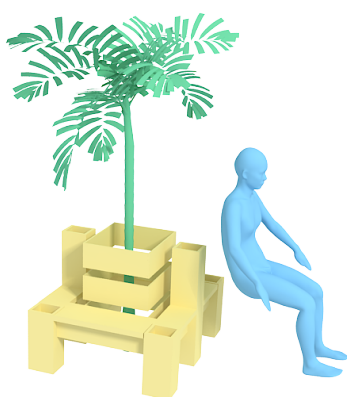
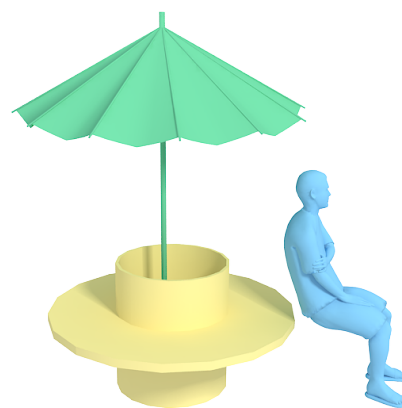
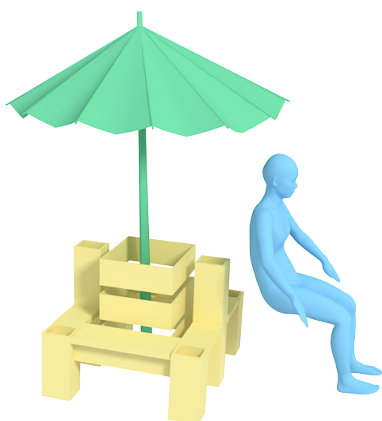
5 Additional Large-Scale Scene Synthesis Results

Input



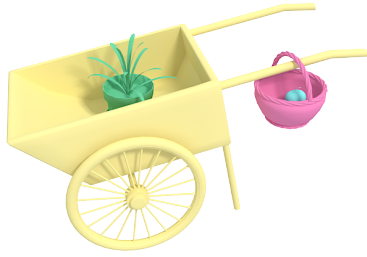
C

Results - [Fisher et al. 2012]



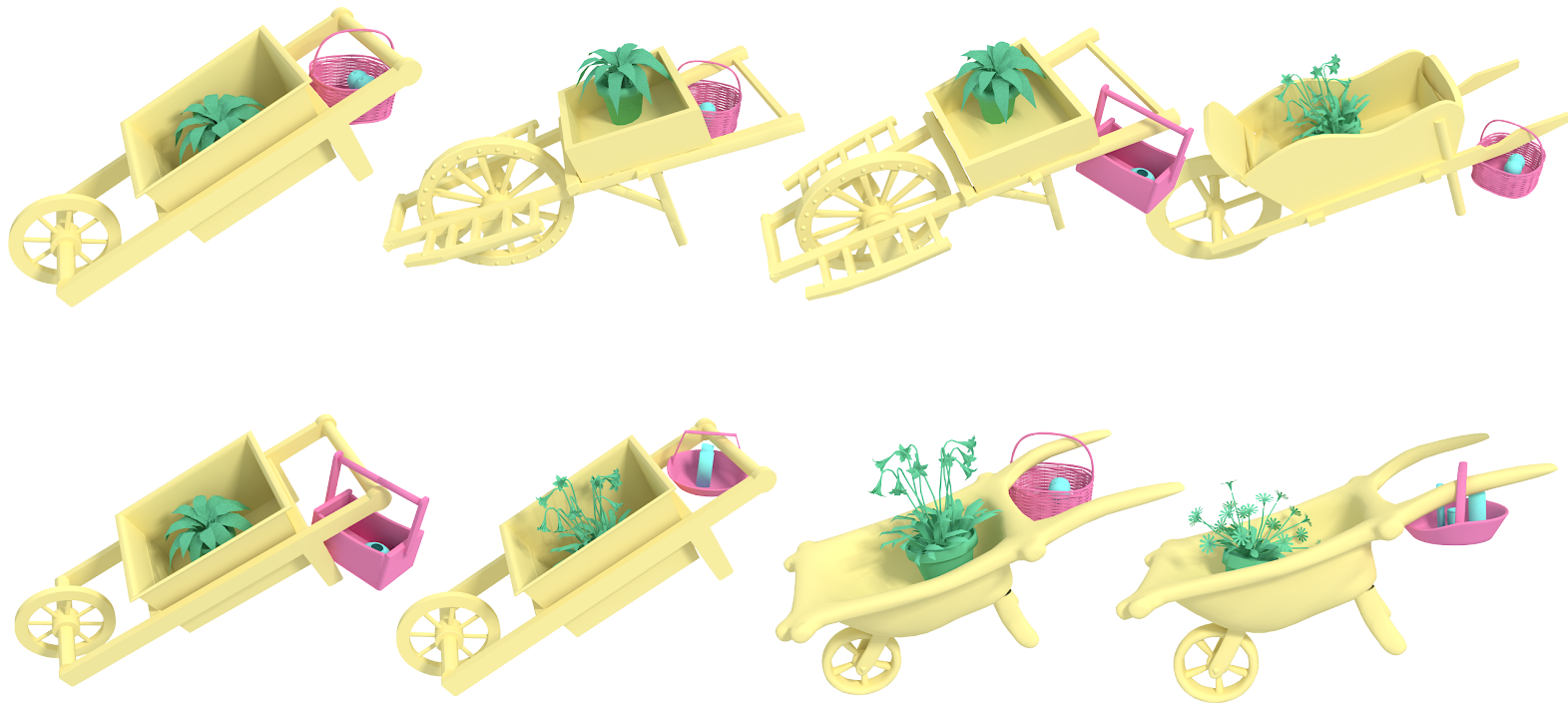
5 Additional Large-Scale Scene Synthesis Results

Input

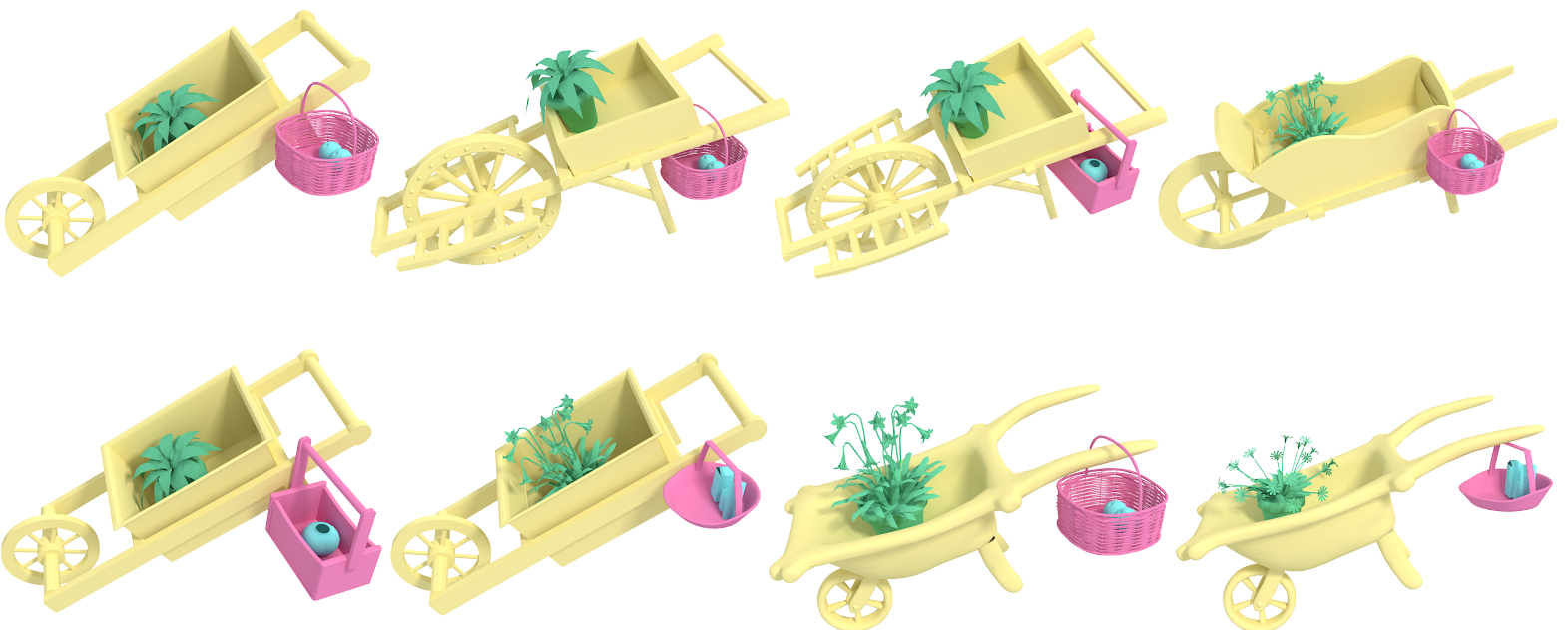


D

Results - ours



Results - [Fisher et al. 2012]



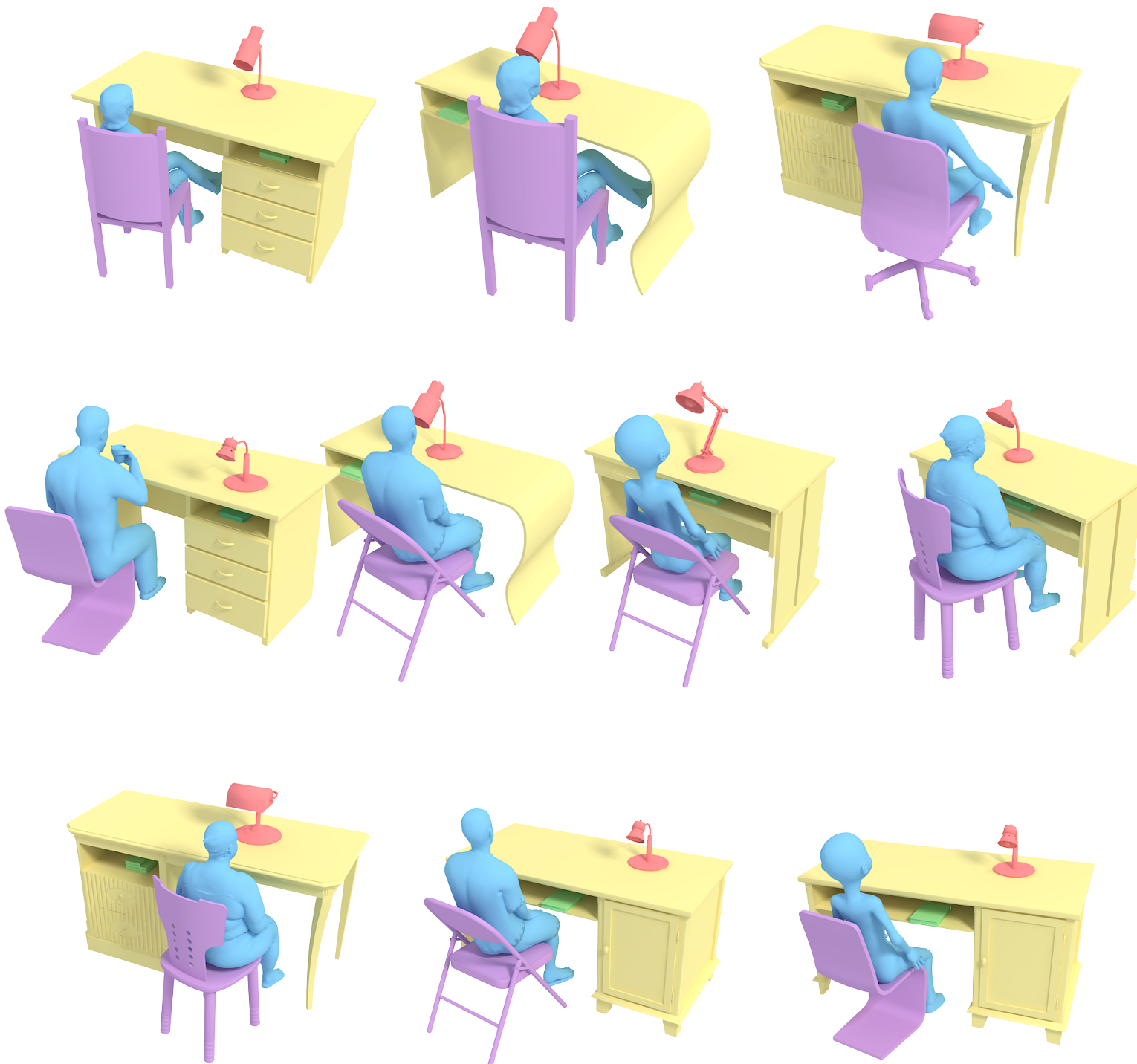
5 Additional Large-Scale Scene Synthesis Results

Input



E

Results - ours



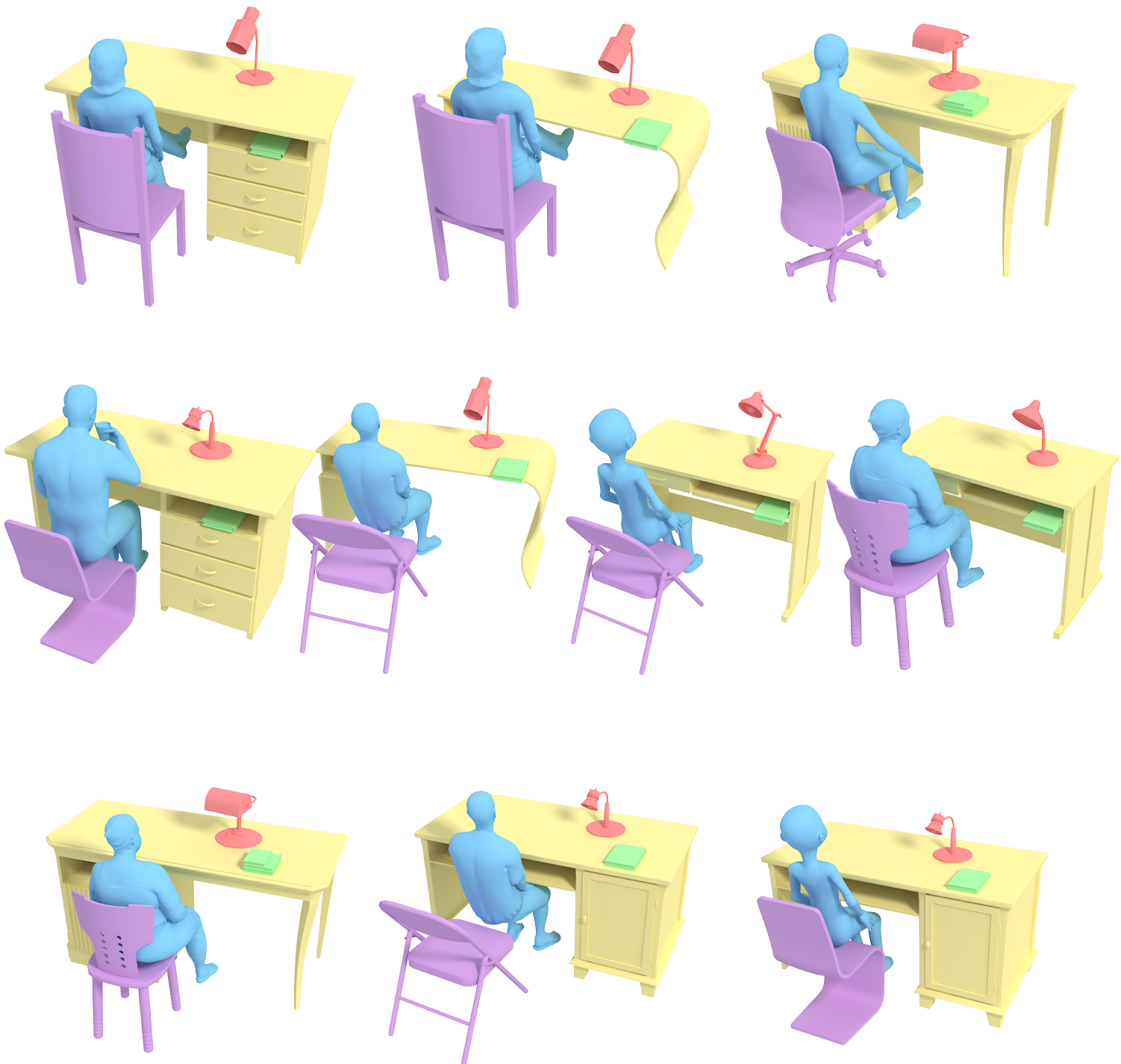
5 Additional Large-Scale Scene Synthesis Results

Input



E

Results - [Fisher et al. 2012]



5 Additional Large-Scale Scene Synthesis Results

Input



F

Results - ours



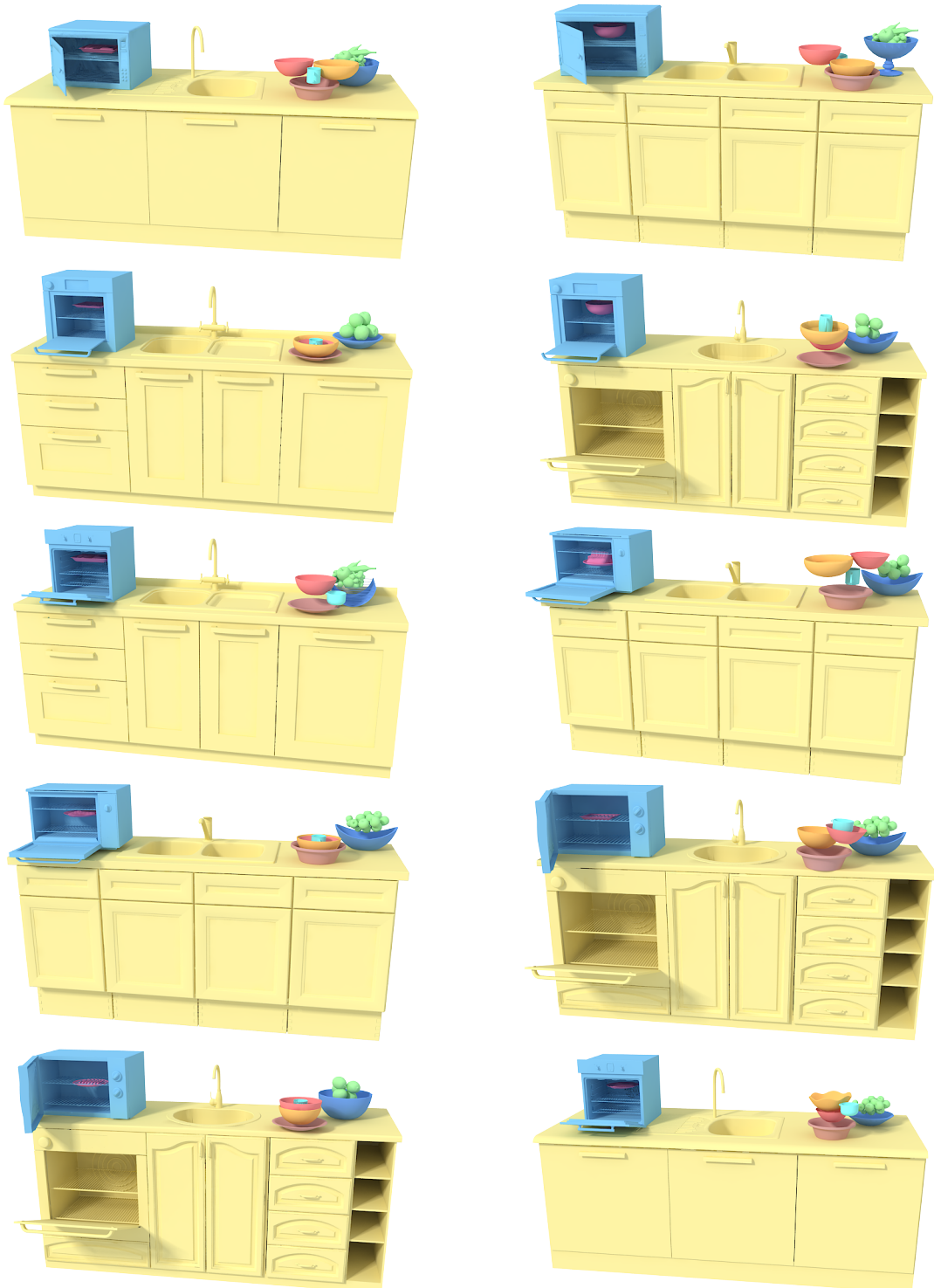
5 Additional Large-Scale Scene Synthesis Results

Input



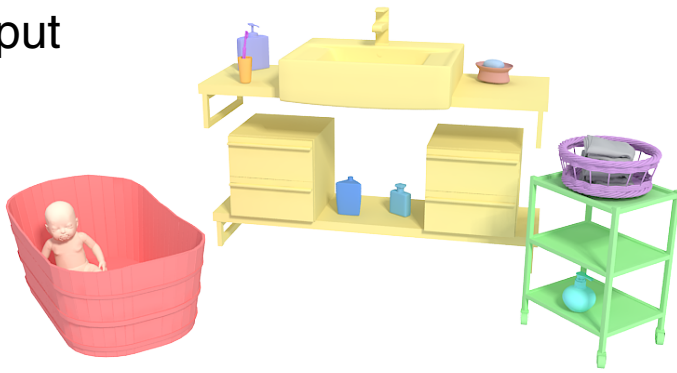
F

Results - [Fisher et al. 2012]



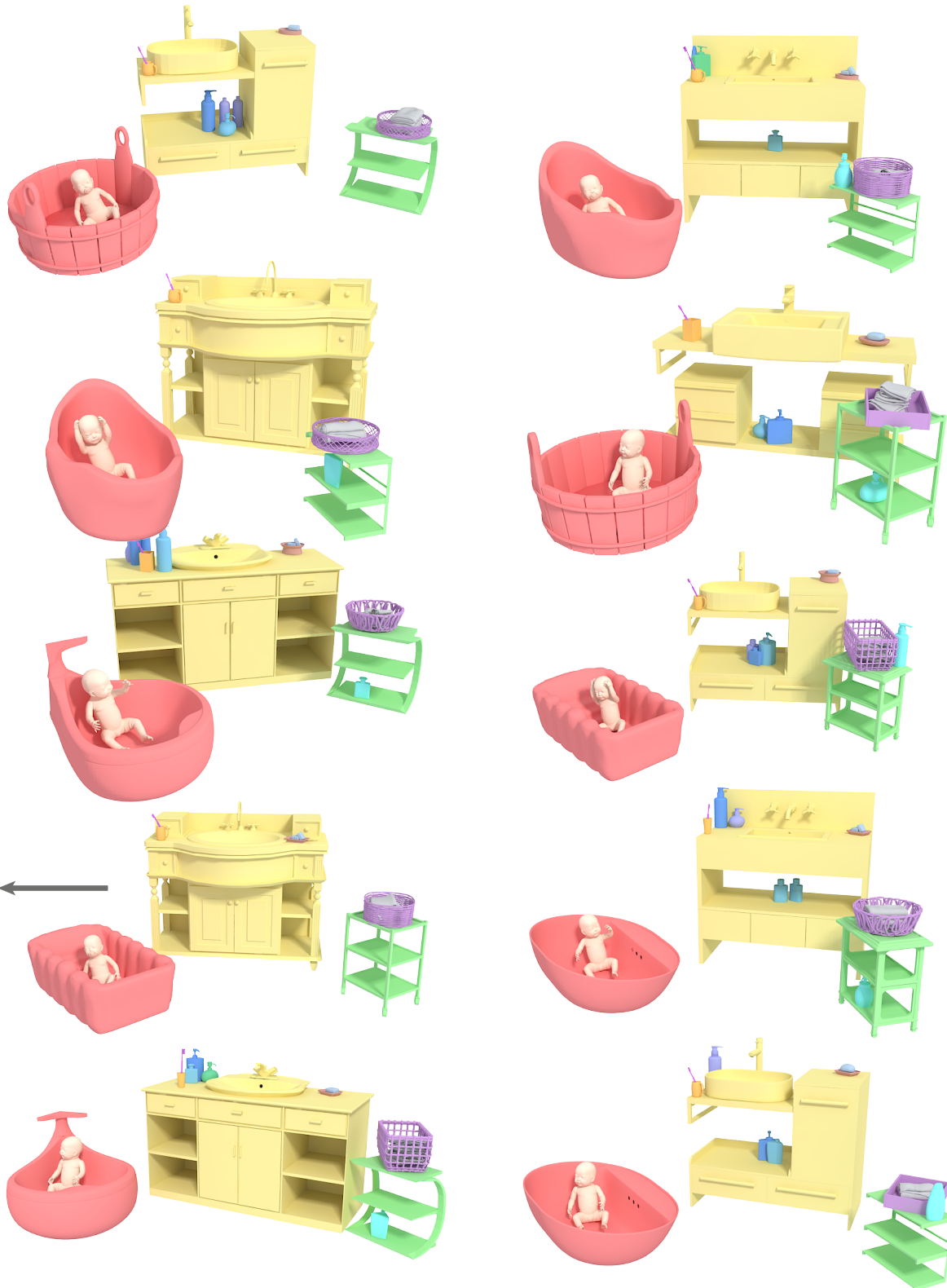
5 Additional Large-Scale Scene Synthesis Results

Input



G

Results - ours

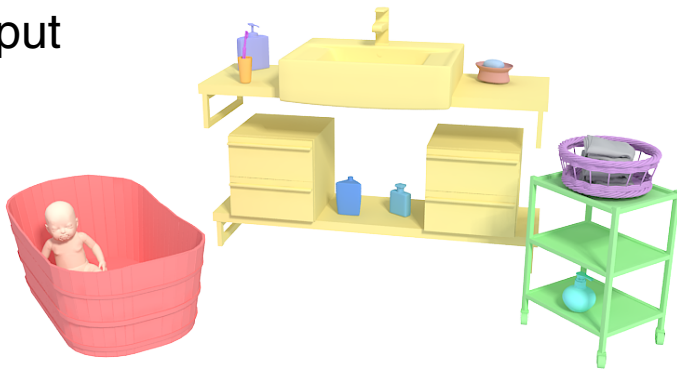


bottles are
inside cabinet



5 Additional Large-Scale Scene Synthesis Results

Input



G

Results - [Fisher et al. 2012]

